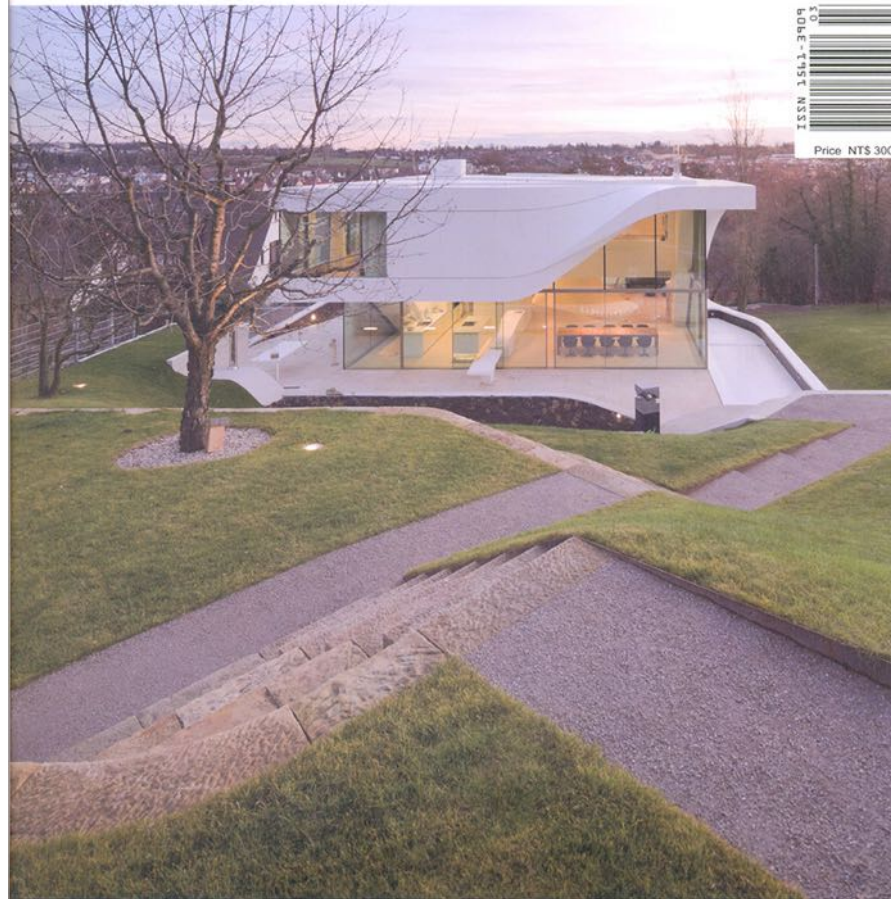


humanity space furniture

人文 藝 園 智利聖地牙哥第十八屆建築博覽會展館設計
台北深澤義人建築所保羅第一樓台
專欄 李鴻志-日本書空間結構
空間 設計 毛燕江建築工作室 禾豐建築室內設計 金澤室內設計
台灣製作 哲維生活設計事務所 彭華山建築師事務所
九號設計 蘇曉室內裝修設計 蘇曉室內設計 貴物設計
展 覽 新 品 2013王力新品牌特展

IW 傢飾

90



9 771136 137600 >
ISSN 1151-1951 NSSI
BOBE-1151-1951

Price NTS 300

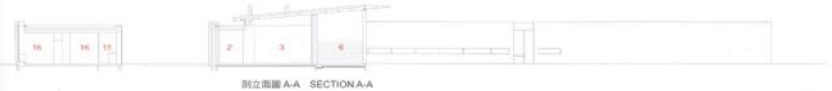


scope

建築師事務所：JACOBSEN
BV House, São Paulo, Brazil
 建築師：Benedict Engenharia
 Bernardes + Jacobsen Arquitetura

建築師事務所：JACOBSEN
 建築師：Benedict Engenharia
 Bernardes + Jacobsen Arquitetura
 建築師事務所：JACOBSEN
 建築師：Benedict Engenharia
 Bernardes + Jacobsen Arquitetura
 建築師事務所：JACOBSEN
 建築師：Benedict Engenharia
 Bernardes + Jacobsen Arquitetura
 建築師事務所：JACOBSEN
 建築師：Benedict Engenharia
 Bernardes + Jacobsen Arquitetura

Principal Architects: Paulo Jacobsen, Bernardo Jacobsen
 Structure Engineering: Benedict Engenharia
 Contractor: HSF Incorporações & Steel Engenharia
 Contractor of Special Steel
 Building Area: 20,714 sqm
 Site Area: 20,714 sqm
 Location: Povoação, São Paulo, Brazil
 Photos: Eduardo Fritsch Architectural Photographer
 Text: Bernardes + Jacobsen Arquitetura
 Collage: Irene Lee



五頁：臥室基本格柵門增加開
 量亦可作為戶外空間的使用



右頁：休閒區順沿地勢建構，以石牆構成視覺效果
左頁：傾斜的屋頂使天花抵達對疊層高度，更為彰顯空間的寬闊感



scope



This house area, included in a large land, surrounded by golf courses and was designed for a family from São Paulo to spend their weekends. A widespread English-style house was chosen to take advantage of the land's amplitude and visual landscapes at a distance, such as lakes and mountain ranges. A large occupancy of the land was explored, encouraging residents and visitors to take full advantage of the whole property. The house is divided into blocks each having a specific function. The main block holds the social area of the house, including the living room, dining room, kitchen, and bar. The second block is located by the pool and aims, linked to the end of the house, for the social project. The most expressive characteristic is the use of non-orthogonal angles used with the intent of guiding the view and making the constructed and non-constructed spaces less rigid.

The three axes that compose the project area are marked by stone walls almost a meter thick. The house walkways are all located along these walls, protected by translucent-pedestals, and giving the sensation of being outside. The bedrooms block have a wooden panel design that enclose the eaves and the veranda, allowing these spaces to be adopted as internal or external areas, but always protecting the frames from the sun and rain. In the social block, a sloped wooden roof was used with the intent of reducing the view and gaining dimensions through the double ceiling height. The leisure block features a home cinema, children's playroom, stadium, humid and dry sauna and changing room. This block emulates the land's topography in order to increase the volume of the house, being visually contained by the stone wall at the bottom of the pool.

這種別墅座落於遼闊的土地上，四周圍繞高爾夫球場，是提供給來自聖保羅 (São Paulo) 的家庭週末度假之用。這種單層別墅非常寬敞，設計目標是要讓屋主能善用廣袤的土地與隨處遠方景緻，譬如秀麗的山巒與水潭。本建築物佔地廣闊，屋主與訪客得以充分使用每一吋土地。它分成數個區塊，每區都提供特定的功用。主要區塊包括社交區、臥室區與休閒區，僕人房位於停車場旁邊，利用一道半透明的竹架走道連通至別墅的其它區域。這種別墅最突出的特點是採用非正交角度，目的是要導引視線，讓建築物與空間的組合不會那麼死板僵硬。

本案包含三條組成房屋區塊的軸線，分別以厚達將近一公尺的石牆來標記。別墅走道皆沿著這些石牆鋪設，其上有半透明的竹架遮陽擋雨，步行於其間恍若置身於戶外。臥室區設置木板拉門，而且外頭搭建屋簷與遊廊，只要稍加調整，這裡既可當作室內空間，亦可化身為戶外環境，但無論如何，此處遮陽避雨毫無問題。社交區有傾斜的屋頂，乃是為了讓天花板達到雙層高度，藉此拓展視野與增廣空間。休閒區設置家庭劇院、兒童遊戲室、洗手間、乾濕三溫暖更衣室，木質階梯懸空地敷來建構以減少房屋面積，在視覺上似乎由地底延伸而上的石牆所組成。



右頁：休閒區規劃有游泳池、三溫暖、兒童遊戲室等空間
左頁：挑高的空間設計藉以加重精緻布景，與戶外景觀連結成一片廣闊的風景



120 121 122 123 124 125 126 127 128 129 130 131 132 133 134 135 136 137 138 139 140 141 142 143 144 145 146 147 148 149 150 151 152 153 154 155 156 157 158 159 160 161 162 163 164 165 166 167 168 169 170 171 172 173 174 175 176 177 178 179 180 181 182 183 184 185 186 187 188 189 190 191 192 193 194 195 196 197 198 199 200 201 202 203 204 205 206 207 208 209 210 211 212 213 214 215 216 217 218 219 220 221 222 223 224 225 226 227 228 229 230 231 232 233 234 235 236 237 238 239 240 241 242 243 244 245 246 247 248 249 250 251 252 253 254 255 256 257 258 259 260 261 262 263 264 265 266 267 268 269 270 271 272 273 274 275 276 277 278 279 280 281 282 283 284 285 286 287 288 289 290 291 292 293 294 295 296 297 298 299 300 301 302 303 304 305 306 307 308 309 310 311 312 313 314 315 316 317 318 319 320 321 322 323 324 325 326 327 328 329 330 331 332 333 334 335 336 337 338 339 340 341 342 343 344 345 346 347 348 349 350 351 352 353 354 355 356 357 358 359 360 361 362 363 364 365 366 367 368 369 370 371 372 373 374 375 376 377 378 379 380 381 382 383 384 385 386 387 388 389 390 391 392 393 394 395 396 397 398 399 400 401 402 403 404 405 406 407 408 409 410 411 412 413 414 415 416 417 418 419 420 421 422 423 424 425 426 427 428 429 430 431 432 433 434 435 436 437 438 439 440 441 442 443 444 445 446 447 448 449 450 451 452 453 454 455 456 457 458 459 460 461 462 463 464 465 466 467 468 469 470 471 472 473 474 475 476 477 478 479 480 481 482 483 484 485 486 487 488 489 490 491 492 493 494 495 496 497 498 499 500



scope





右頁：無論室內外，社交區各個座位區域自成氛圍，是為輕鬆自在的交誼場域
 左頁上圖：建築非正交角度的結構形式吸引視線，讓建築物與空間的組合不覺地連續
 左頁下圖：竹葉提供遮陽及採光之作用，消弭室內與室外空間界線



scope



右頁：分為不同區域的建築體中，臥室區的設置滿足基本生活機能所需
左頁上圖：臥室區木柵拉門與窗簾時樣貌
左頁下圖：透過車庫及竹架步道連接，社交區可通至臥室滿空間