



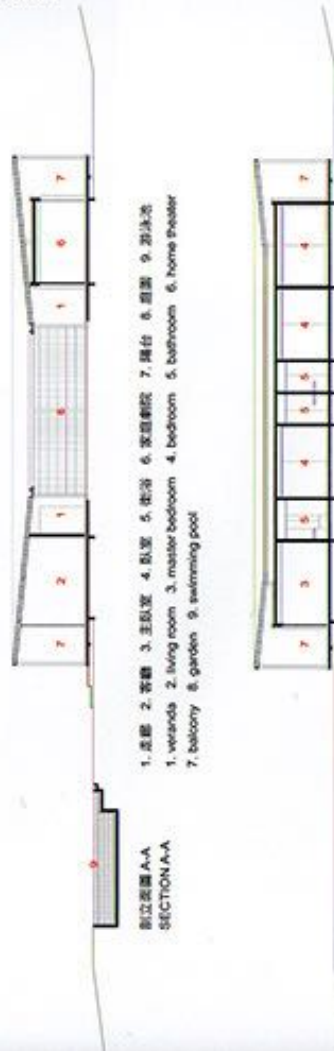
scope

ML House, São Paulo, Brazil

Bernardes + Jacobsen Arquitetura

州建築師 -- 泰亞戈·雅各森  
 建築 -- 泰亞戈·雅各森 伊麗莎·雅各森  
 建築師 -- Benedixt  
 設計單位 -- JHSF Incorporacoes  
 房屋類型 -- 別墅  
 建築面積 -- 918.14 平方米  
 地盤面積 -- 2,790.74 平方米  
 建築日期 -- 巴西聖保羅市  
 裝修 -- 新古典主義、歐陸新古典主義  
 風格 -- 新古典  
 材料 -- 木、磚、玻璃、金屬、陶瓷  
 類型 -- 住宅

Principal Architects -- Thiago Bernardes -  
 Paulo Jacobsen - Bernardo Jacobsen  
 Structural Engineering -- Benedixt  
 Contractor -- JHSF Incorporacoes  
 Character of Space -- Weekend House  
 Building Area -- 918.14 m<sup>2</sup>  
 Site Area -- 2,790.74 m<sup>2</sup>  
 Location -- Porto Feliz, São Paulo, Brazil  
 Photos -- Leonardo Finotti Architectural  
 Photographer  
 Interview -- Rowena Liu  
 Text -- Bernardes + Jacobsen Arquitetura  
 Collator -- Irene Lee



圖立剖面 A-A  
SECTION A-A

1. 走廊 2. 客廳 3. 主臥室 4. 臥室 5. 泳池 6. 家庭影院 7. 陽台 8. 廚房 9. 游泳池  
 1. veranda 2. living room 3. master bedroom 4. bedroom 5. bathroom 6. home theater  
 7. balcony 8. garden 9. swimming pool

圖立剖面 B-B  
SECTION B-B

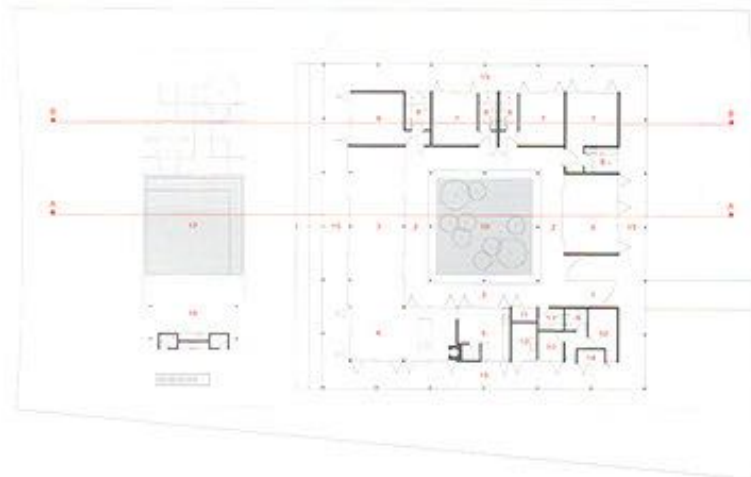
這是一間供一對夫妻及其兩位女兒週末度假的別墅，距離巴西 (Brazil) 聖保羅 (São Paulo) 有一個小時的車程。別墅類型非常簡單，從平面圖可看到一連串方形結構：屋簷是最外層的方形結構，緊接著是外部與內部立面，然後又是屋簷，最內部的方形結構則是庭園。主要入口通道是穿過一扇巨型旋轉門，然後接到內部走廊，這種稱為「engwa」的結構圍繞內部庭園。

別墅有兩個立面，一個朝向戶外環境，另一個朝向內部庭園。除了提供更多光線，這種建構方式讓內部通道都圍繞著庭園，臥室朝西，居家設施則朝東。別墅社交區位於北側，朝向場址後方及游泳池所在的庭園。方形游泳池與內部庭園大小一致且對齊，客廳則介於這兩個區域之間。家庭劇院位於朝南的主要走廊旁邊。就結構而言，建築師採用較為細小的支柱，這些支柱位於屋頂端點，要用更多根才能營造律動感。別墅精緻從地面懸空，各個房間也與屋頂分離，唯一例外的是客廳。這是為了打造雙層挑高，外部牆壁、地板與屋頂都以木板覆面，所有的門也用條紋木板覆面，具有良好的隱蔽效果，它們可開啟關閉來發揮最大的功效。

This is a weekend house for a couple with two young daughters, located an hour's drive from the city of São Paulo. The houses geometry is quite simple. In the floor plan, a succession of squares are seen, having the eaves as the most external square, followed by an external and internal facade subsequently, ending in another eaves and formed by a garden in the most internal square. The main access is through a large pivoting door leading to an internal veranda, a type of engwa that outlines the garden. The house has two facades, one facing the exterior while the other faces the interior garden. This feature in addition to providing more brightness also makes all the internal accesses around the garden. The bedrooms face west and the service areas face east. The social part of the house is positioned in the north facade, facing the back of the land and facing the garden where the swimming pool is set. The square shaped swimming pool has the same dimensions as the interior garden and they are aligned. The living room is positioned between these two blocks. The home theatre is located by the main veranda facing the south facade. In regards to the structure, smaller pillars were chosen and as a result more were used to set a rhythm, the pillars are located in the extremities of the rooftop. The house is slightly suspended from the floor and the roof is detached from the volume of the rooms except for the living room, which intent was to make the most of its double ceiling height. The exterior walls, floor and roof are all covered in wood and doors are camouflaged by the striped wooden panels, which can be opened or closed to have maximum use of the wooden pieces.



右頁：主要入口處穿過一個巨型旋轉門，選擇室內游泳池  
左頁：旋轉門採用木門片並以磁石材料製造，適風且具有良好建築效果



平面圖 PLAN

1. 大門入口 2. 走廊 3. 客廳 4. 餐廳 5. 廚房 6. 主臥室 7. 臥室 8. 浴室 9. 家庭影院  
 10. 健身房 11. 儲物室 12. 洗衣房 13. 衛生間 14. 轉梯房 15. 露台 16. 游泳池 17. 游泳池  
 1. entrance 2. veranda 3. living room 4. dining room 5. kitchen 6. master bedroom 7. bedroom 8. bathroom 9. home theater  
 10. servant's quarters 11. storeroom 12. laundry room 13. rest room 14. technical room 15. balcony 16. garden 17. swimming pool 18. barbecue



